

## 2-Bedroom Apartment (Ground Floor)

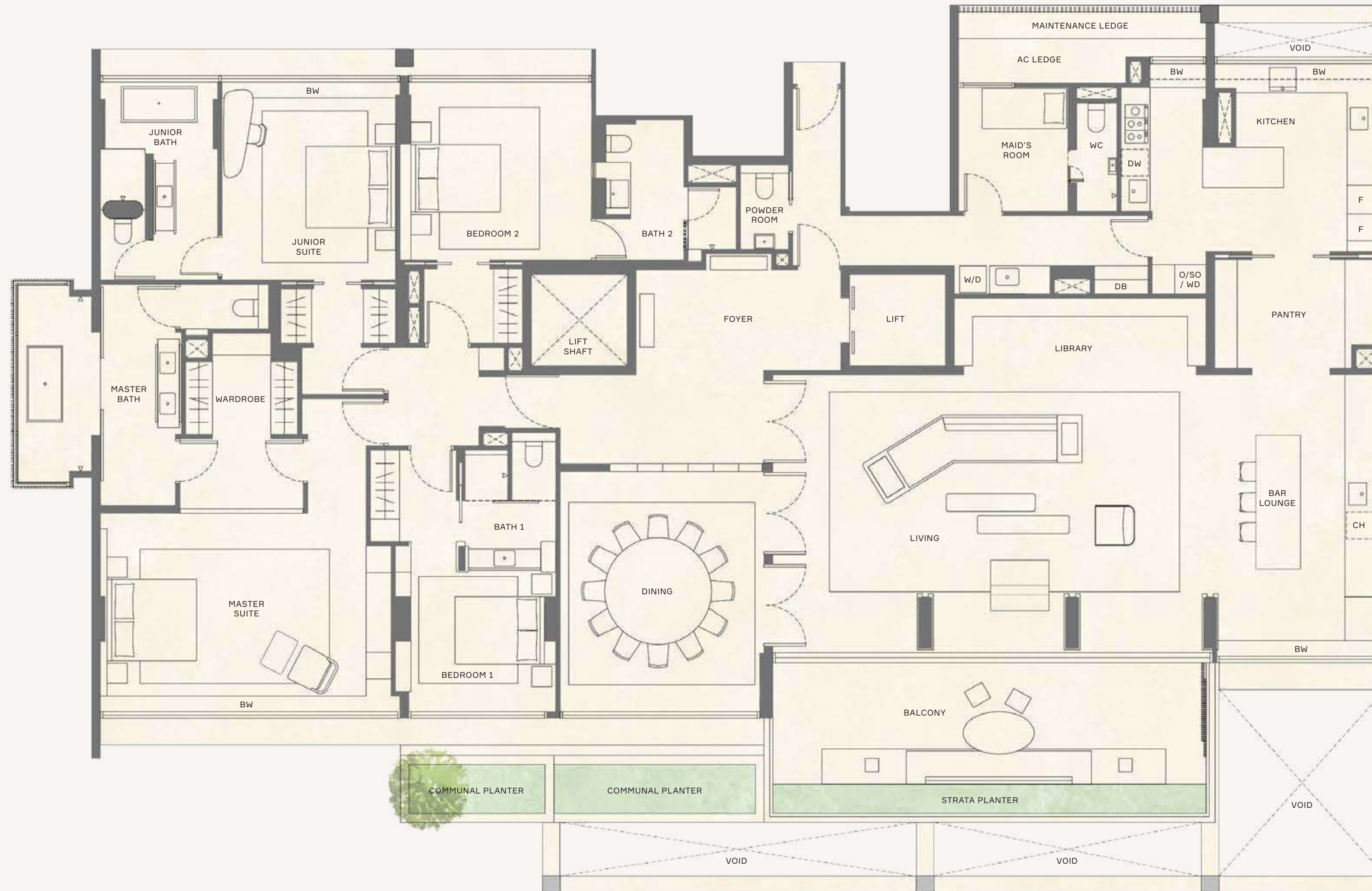
**APARTMENT SIZE**  
Est. 297 sqm / 3,197 sqft

**UNITS**  
#01-01 / #01-02\*  
\*Mirrored



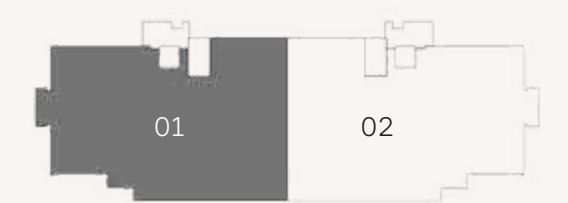
Area includes air-con (A/C) ledge. Balcony/PES and strata void area where applicable. Please refer to the key plan for orientation. The plans are subject to change as may be approved by relevant authorities. All floor plans are approximate measurements only and are subject to final re-survey. The balcony shall not be enclosed.

# 4-Bedroom Apartment



**APARTMENT SIZE**  
Est. 417 sqm / 4, 489 sqft

**UNITS**  
#02-01 — #08-01  
#02-02 — #08-02\*  
\*Mirrored



Area includes air-con (A/C) ledge. Balcony/PES and strata void area where applicable. Please refer to the key plan for orientation. The plans are subject to change as may be approved by relevant authorities. All floor plans are approximate measurements only and are subject to final re-survey. The balcony shall not be enclosed.

The position and presence of the communal planter will vary on different floors. Please refer to the unit plan for actual provision.